

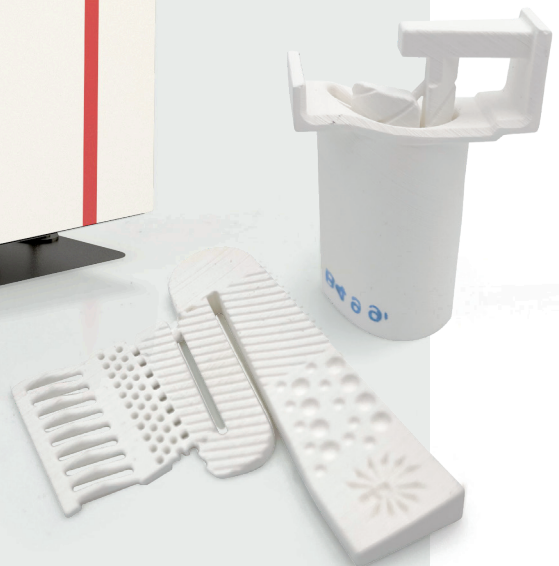


CERAMIC APPLICATIONS
MOVINGLight® Technology
Liquid Resin 3D Printers

PRODWAYS MACHINES



**CERAM PRO
385 / 385+**



**HIGH
RESOLUTION
AND LED POWER**



**EFFICIENT
PRODUCTION
SPEED**

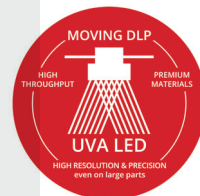


**MODULAR
TOP-DOWN BUILD
PLATFORM**



**OPEN PROCESS
PARAMETERS
MACHINE**

www.prodways.com



USER FRIENDLY INTERFACE AND WORKFLOW

Intuitive dedicated software and a touchscreen interface for user-friendly operation.

UNMATCHED RESOLUTION

42 μm per pixel, dozens millions pixels per layer

LARGE BUILD VOLUME

Up to 300 x 445 x 350 mm

RUGGED DESIGN AND HIGH QUALITY COMPONENTS

Powered by extensive R&D, rigorous testing, and premium materials, CERAM PRO 385 / 385+ ensures reliable and high-quality for demanding ceramic 3D printing applications.

OPTIMIZED WAVELENGTH FOR ENHANCED DETAIL

Specific wavelength of 385nm, providing a competitive edge in achieving finer details. (365nm and 405nm version available)

CONSISTENT AND RELIABLE TECHNOLOGY

MLT patented top-down DLP technology

MINIMAL SPACE REQUIREMENT

Printer size : 855 x 1100 mm

CERAM PRO 385 / 385+



SPECIFICATIONS

	Number of DLP Heads	1 or 2 heads
	Applications	Investment casting related applications / Technical ceramics / Open for R&D*
	Technology	UV-LED DLP, 385 nm wavelength (365 and 405 nm version on demand)
	Materials	Qualified with Silica and Alumina slurries from Sintx
	Max. Build envelope size (LxWxH)	300 x 445 x 350 mm 10.3 x 12.9 x 13.7 inches
	Native pixel size (X,Y)	42 μm (0.0016 inches)
	Layer thickness*	50 – 175 μm 0.001 to 0.006 inches
	Platform type	Perforated metal platform
	Build platform (LxW)	From 75 x 40 mm up to 300 x 445 mm
	Vat build height	Up to 350 mm - Starts as low as 500 mL initial fill
	Printer size (LxWxH)	855 x 1100 x 1780 mm 33.7 x 43.3 x 70.1 inches
	Weight	510 Kg 1125 lbs.
	Power requirements	210 – 240 VAC, 8-12A, 50/60 Hz

FOR TAILORED SOLUTIONS TO MEET SPECIFIC MATERIAL REQUIREMENTS OR APPLICATIONS, EXPLORE OUR ALTERNATIVE WAVELENGTH OPTION CERAM PRO 405/405+ AND CERAM PRO 365 (including a specific material offer)

* Please note that the application is contingent upon factors including geometry, build style, and material, and variations in these elements may affect outcomes